



***POLITE NOTICE***  
Please Respect Our  
Neighbours.

*Thank You*



included in this package

- **Map of Farm** – First aid, water station, washroom, goats, forest trail
- **Safety** – See attachments for wildlife (black bears and cougars), plus sun safety
- **Trails** – Map and current conditions (hazards to expect)
- **Goat Feeding Poster**

activity ideas

**Scavenger Hunt**

- Clipboards with scavenger hunt sheets can be found in the barn.



**Visit the Goats**

- Best practices for goat handling:
  - Get down to their level;
  - Do not squeeze or pick up the goats;
  - Use calm and quiet voices; and
  - Bring them a treat (see poster).



**U-Pick Flowers**

- Make yourself a bouquet of flowers!
- Pruners and glass jars are in totes near the crops.

**U-PICK**

**U-Pick Berries**

- Green berry pint containers are in a clear tote in the field.



**Sign the Guestbook**

- ...in the barn. 😊

- **Note for U-Pick Activities:** Please add your program name, # of guests, date, and number of bouquets or pints picked to the Harvest Log (in the field totes).

*Logbook*



essentials



- Grab a spot on the **left side of the driveway** near the house, overflow **in front of the barn**, or drive through the double gates into the field (left turn after driving by the house) and park at the **gravel cul-de-sac** up top by the planted area/mulch piles (reserved for minimal mobility visitors).

BE READY.  
BE PREPARED.



- Wear **closed-toed shoes** (runners, gum boots, hiking boots).
- **Dress for the weather** (loose fitting clothes, hats, layers, raingear...and don't forget sunscreen).
- Bring a **water bottle** you can **refill at the water station in the barn.**
  - Note: Taps in field are labelled NOT SAFE TO DRINK.
- If you open a gate – close the gate behind you!
- Clean up after your dogs.
- Pack out what you pack in. 😊



Please close the gate  
securely behind you



safety



There are a few things to be aware of when spending time at the farm...

- Use caution – the **ground is uneven!**
- Watch for **hazardous plants** (see below) – stinging nettles and blackberries are abundant on the farm.
- Watch for **wildlife!**
  - Read the **wildlife safety posters** attached and posted under the gazebo.
- **ALLERGY ALERT** – pollinators are abundant, so those with **bee/wasp allergies** should come prepared.

TAKE CARE  
UNEVEN  
GROUND

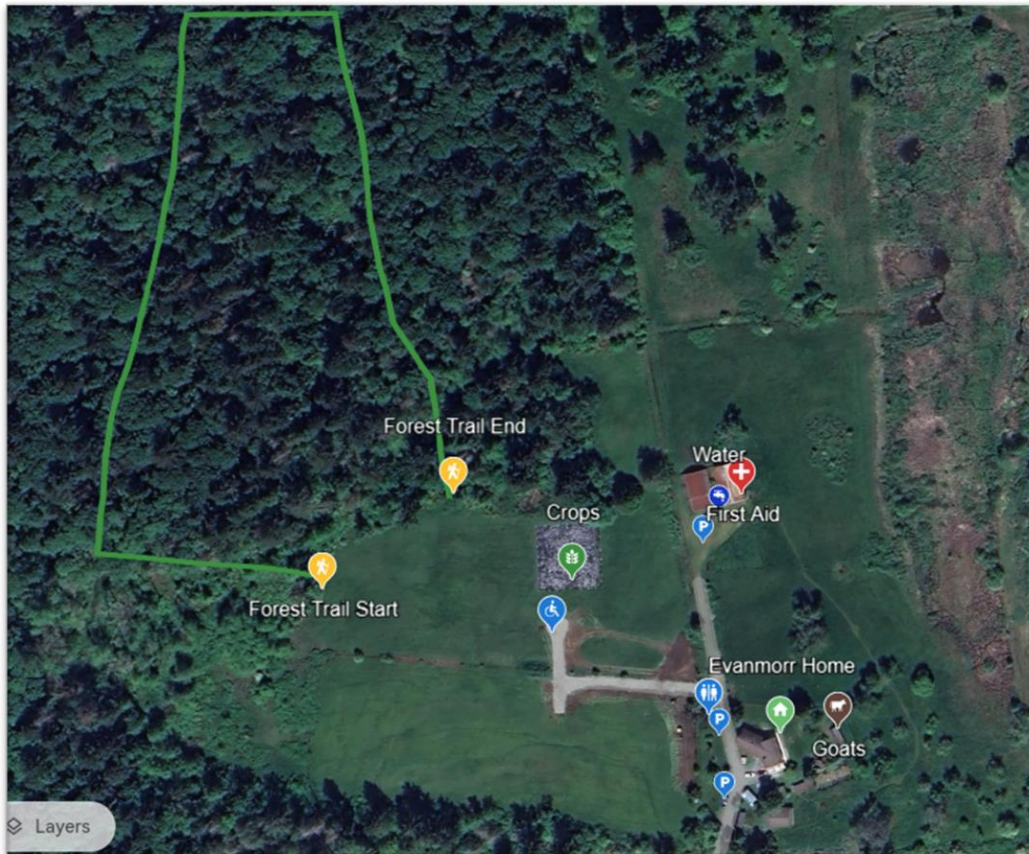


Image 1: Stinging Nettles



Image 2: Himalayan Blackberry

trail and site map



What to expect on the trail:

- The **forest loop** is currently only accessible for those with **good mobility on uneven and sloped terrain**. Use caution – it's slippery!
- The trail marked on the map is approximately **2 km from gate to gate**. Follow the painted arrows and please stay on the main trail.

